

# EpsonNet Config Operations Guide

---

---

## Contents

### ***Copyright and Trademarks***

### ***Using EpsonNet Config***

Product Functions .....	4
Workflow .....	5
Setting or Changing Devices One at a Time. ....	7
Creating a SYLK file to Describe the Settings .....	12
Creating a SYLK file by acquiring information from the connected device (Windows only) .....	12
Creating a new SYLK file .....	15
Creating a Backup File (Windows Only) .....	16
Creating a backup file for all devices .....	16
Creating a backup file for a selected device .....	18
Creating a recovery file .....	20
Making Batch Settings for Devices (Windows Only) .....	23
Assigning information automatically .....	23
Assigning information from settings one at a time (Manually assigned) .....	28
Registering Different Address Books .....	32
Editing individually .....	32
Making batch settings .....	34
Setting an Administrator Password .....	38
Setting Items for the SYLK File .....	39

---

# Copyright and Trademarks

No part of this publication may be reproduced, stored in a retrieval system, or transmitted in any form or by any means, electronic, mechanical, photocopying, recording, or otherwise, without the prior written permission of Seiko Epson Corporation. The information contained herein is designed only for use with this Epson product. Epson is not responsible for any use of this information as applied to other products.

Neither Seiko Epson Corporation nor its affiliates shall be liable to the purchaser of this product or third parties for damages, losses, costs, or expenses incurred by the purchaser or third parties as a result of: accident, misuse, or abuse of this product or unauthorized modifications, repairs, or alterations to this product, or (excluding the U.S.) failure to strictly comply with Seiko Epson Corporation's operating and maintenance instructions.

Seiko Epson Corporation shall not be liable for any damages or problems arising from the use of any options or any consumable products other than those designated as Original Epson Products or Epson Approved Products by Seiko Epson Corporation.

EPSON<sup>®</sup> and EPSON ESC/P<sup>®</sup> are registered trademarks and EPSON ESC/P2<sup>™</sup> and EPSON Stylus<sup>™</sup> are trademarks of Seiko Epson Corporation.

Microsoft<sup>®</sup>, Windows<sup>®</sup> and Windows Vista<sup>®</sup> are registered trademarks of Microsoft Corporation.

Apple, Macintosh, Mac, Mac OS, AppleTalk, and Bonjour are trademarks of Apple Inc., registered in the U.S. and other countries.

Oracle and Java are registered trademarks of Oracle and/or its affiliates. Other names may be trademarks of their respective owners.

**General Notice:** Other product names used herein are for identification purposes only and may be trademarks of their respective owners. Epson disclaims any and all rights in those marks.

Copyright © 2013 Seiko Epson Corporation. All rights reserved.

---

# Using EpsonNet Config

---

## Product Functions

This product allows the network administrator to detect devices (such as printers, scanners, copy systems, and so on) or wireless print adapters on the network, and then setup or change functions for the network devices individually or as a batch. Gathered and stored configuration information can be output to an external file. This file can then be used to restore previous settings created by the user at any time. The administrator's workload can be reduced by performing batch setups for multiple devices on the network.

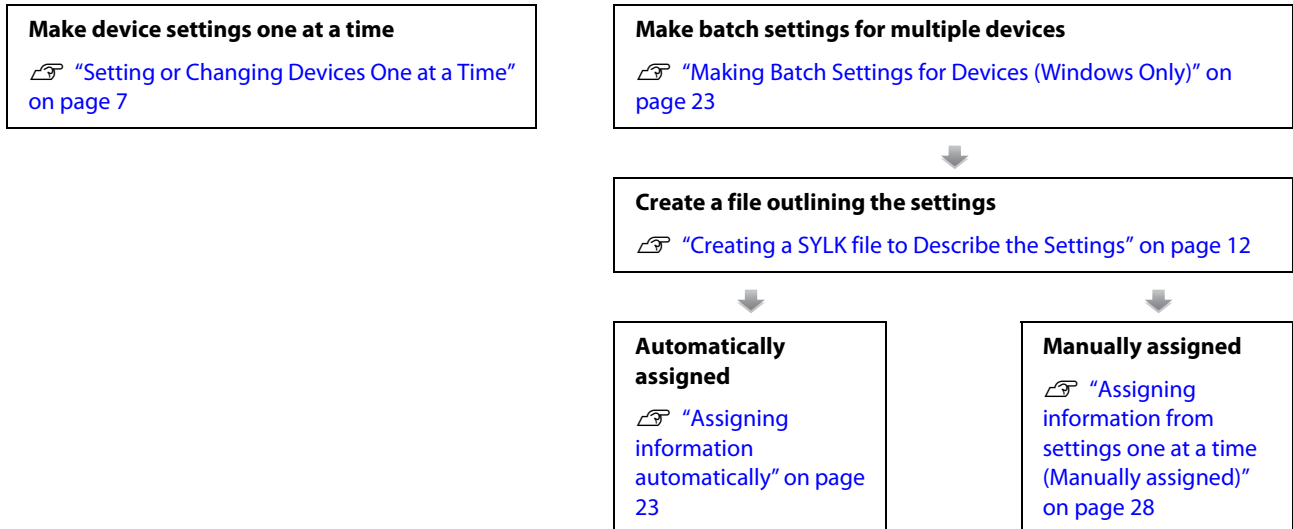
- ☐ You can make settings or changes for individual network devices or all network devices as a batch.
- ☐ You can output configuration information for the network device as a SYLK format file. Because the SYLK format is supported by Microsoft Excel, the user can make batch settings or changes to the configuration information for multiple devices.
- ☐ Previous configuration information is stored as a log, and the file can be output or changed. By performing a batch import of the file, you can restore the settings for individual or multiple network devices.
- ☐ For multi-function printers, you can import an abbreviated number for the fax or the email allowing you to save, edit, or export (for supported models only).
- ☐ The administrator can set a password to protect the network device's configurations.
- ☐ You can simplify device management by registering the device to My Device.
- ☐ As well as devices on the local network, you can also make settings or changes to devices on an external network (you need to change Search Parameters).

**Note:**

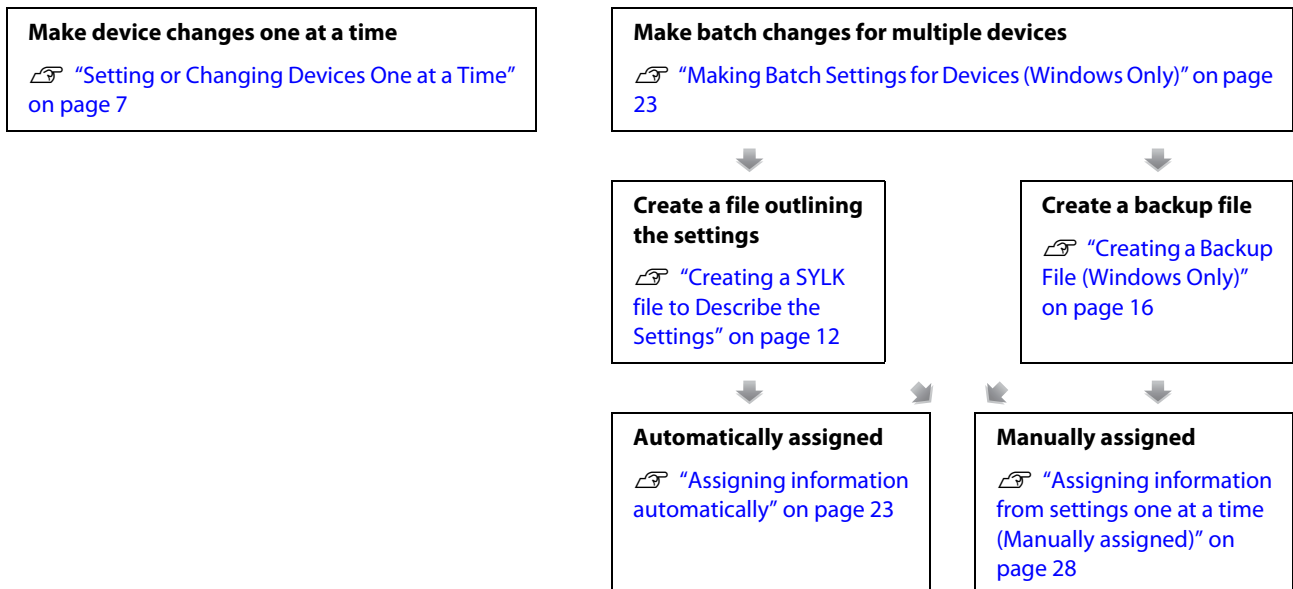
- ☐ The batch setting function is only available for Windows versions.
- ☐ In the EpsonNet Config Portable edition, the log file is deleted when the application is closed.

## Workflow

### First Time



### Change the device's settings



### Restore the device's settings


#### Restore the device's settings one at a time

 ["Setting or Changing Devices One at a Time" on page 7](#)

#### Restore the settings for multiple devices as a batch

 ["Making Batch Settings for Devices \(Windows Only\)" on page 23](#)


#### Create a file outlining the settings

 ["Creating a SYLK file to Describe the Settings" on page 12](#)


#### Create a backup file

 ["Creating a Backup File \(Windows Only\)" on page 16](#)

#### Automatically assigned

 ["Assigning information automatically" on page 23](#)

#### Manually assigned

 ["Assigning information from settings one at a time \(Manually assigned\)" on page 28](#)

The following section provides a detailed explanation for how to make each setting. This guide focuses on making network item settings for network-connected devices.

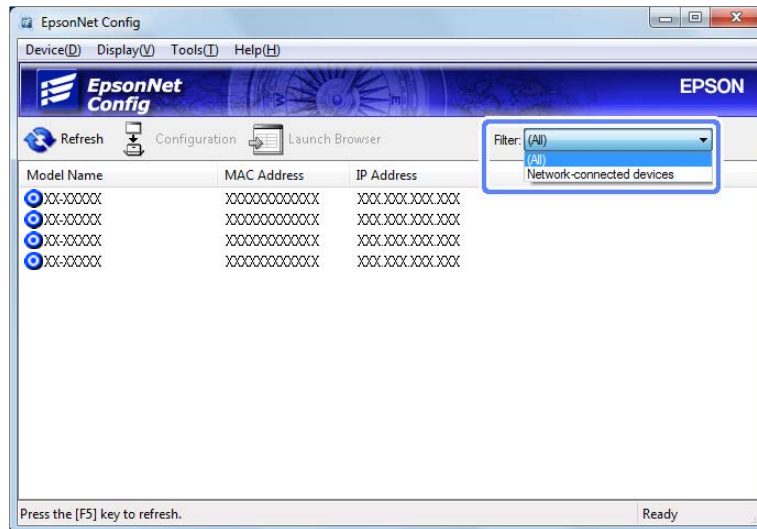
# Setting or Changing Devices One at a Time

This section explains how to configure one device at a time using EpsonNet Config.

1

Start EpsonNet Config, and then change Filter to **Network-connected devices**.

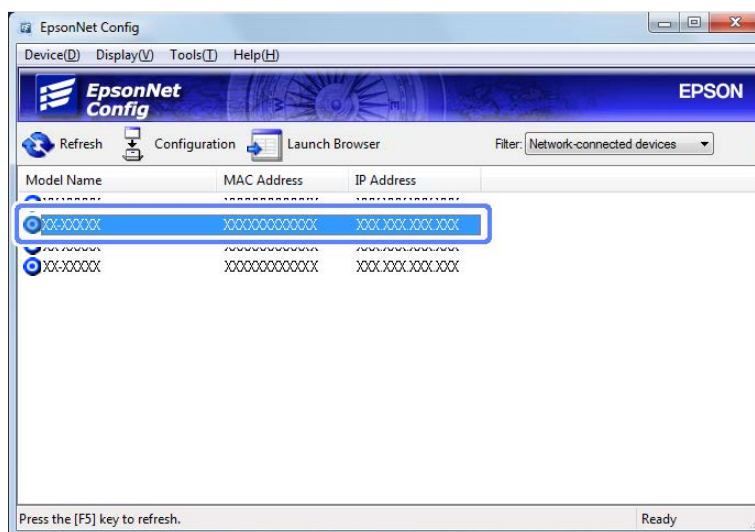
The default is (All). For inkjet label printers, select **USB-connected devices** and **COM-connected devices** if necessary.



2

Select the device you want to configure.

If the device is not displayed, check that the device or wireless adapter is turned on, or if the same segment as the computer has the device or wireless adapter. Set **Tools - Options - Search Parameters** to display devices outside the local network, or COM-connected devices.



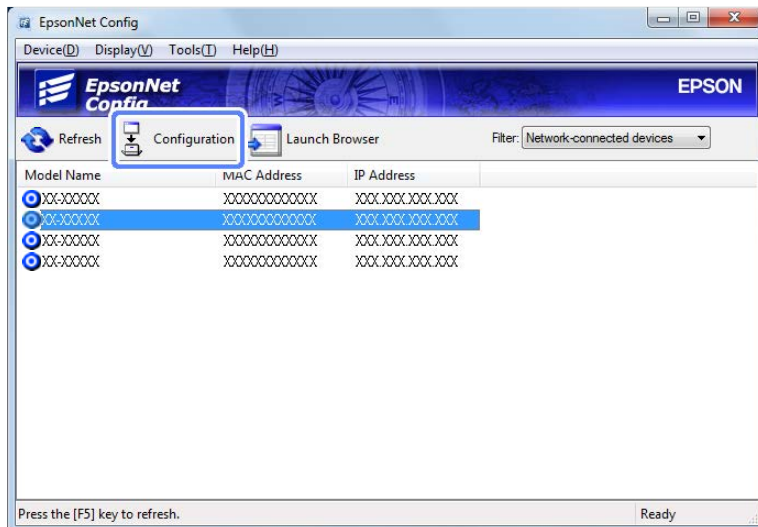
## Using EpsonNet Config

### Note:

- ❑ *If the model name is not displayed...*  
The model name may not be displayed if the IP address for the network I/F stays at the default setting (192.168.192.168). In this case, you need to determine the device using the MAC address. Although you can check the MAC address on the network status sheet, for scanners and inkjet label printers you can check the sticker on the base of the network I/F. Some ink jet printers can also be identified on the control panel. Due to page printer model specifications, the default IP address (192.168.192.168) cannot be used on a network. Make sure you match the device to the current environment and change the IP address.
- ❑ *Devices that use wireless LAN, such as inkjet label printers, may not be displayed because their default setting is ad-hoc mode. In this case, set the computer's wireless LAN environment to ad-hoc mode.*
- ❑ *When identifying and selecting devices with the same model...*  
Use the MAC address to distinguish between multiple devices with the same model. Although you can check the MAC address on the network status sheet, for scanners and inkjet label printers you can check the sticker on the base of the network I/F. Some ink jet printers can also be identified on the control panel.
- ❑ *When displaying devices outside the local network or zone...*  
When the device is outside the computer's local network, click **Tools - Options - Search Address**, and set the search address on the Search Address screen to display the device.
- ❑ *After selecting the device, you can start the Web-based EpsonNet Config by clicking **Launch Browser**. If you cannot start by clicking Launch Browser, check that the IP address has been changed from its default setting, or that the IP address is not all ready in use.*
- ❑ *To register to My Devices...*  
Select the device you want to register, and then click **Device - Register to My Device** or right-click to display Register to My Device, and register the device. When registered, a star appears on the product name icon. This is useful for managing a specific device because only devices that you have registered in Filter are displayed when you register your device.

## 3

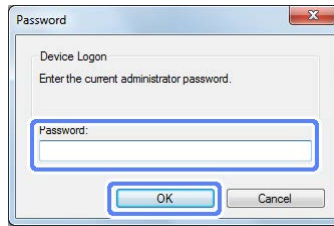
Click **Configuration**.





## Using EpsonNet Config

When the password entry screen is displayed, enter the password, and then click **OK**.



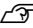
4

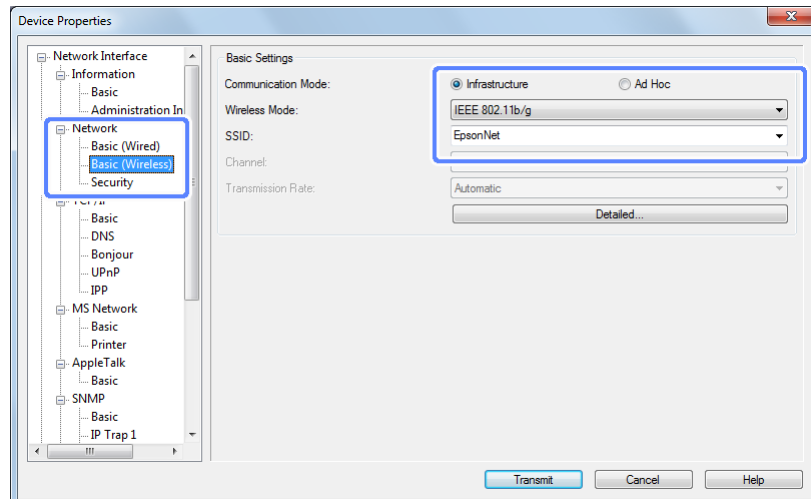
If there are Network items in the setting items list on the left-hand side of the screen, set **Network - Basic (Wireless)** or **Security** information as necessary. If no Network items are displayed, go to step 5.

Set the Ethernet information for the network I/F on the Network screen.

The display items differ depending on whether the access method is wired or wireless. When connecting wirelessly, set the **Basic (Wireless)** items on the Network screen if necessary.

See the following for the setting methods for each screen.


 EpsonNet Config Online Help

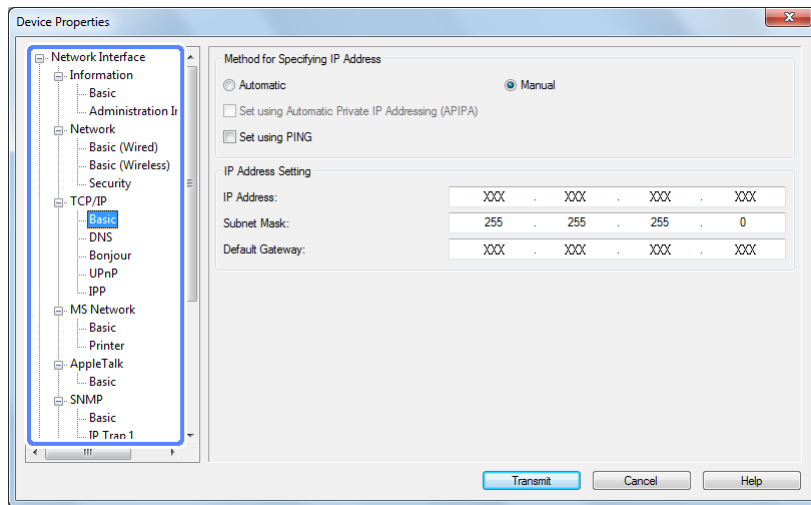


5

Set the items for each protocol.

## Using EpsonNet Config

Set the Network I/F to match the environment being used.  
See the following for the setting methods for each protocol screen.  
 EpsonNet Config Online Help

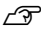


6

Set other items as necessary.

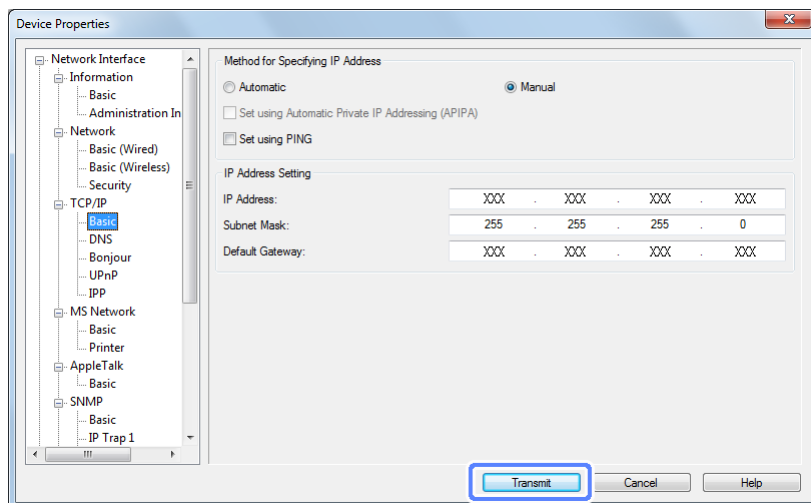
Set the device to match the environment being used. Displayed items differ depending on the model being used.

See the following for the setting methods for each item.

 EpsonNet Config Online Help

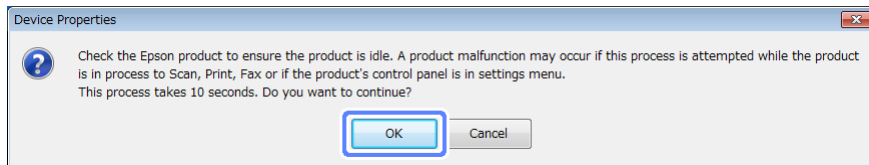
7

Click **Transmit** to set the necessary items.

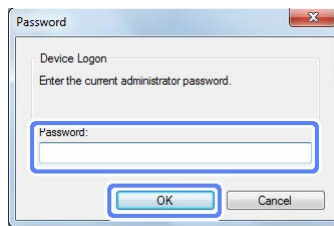


## Using EpsonNet Config

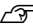
8 Click **OK**.



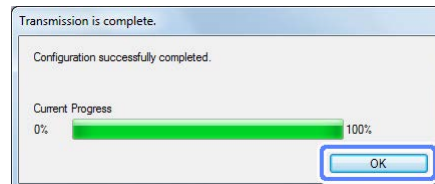
9 When the password entry screen is displayed, enter the password, and then click **OK**.  
Transmit the settings.



**Note:**

- ☐ The information is transmitted to the device, and then the message "Configuration successfully completed." is displayed. Do not turn off the device or the wireless adapter, and do not send any data to the device.
- ☐ See the following when setting the password.  
 ["Setting an Administrator Password" on page 38](#)

10 Click **OK**.



11 It can take up to three minutes until the settings are enabled.  
Do not turn off the device or wireless adapter during this time.

Click **Refresh**, and then check that the icons for the settings in list view have changed from gray to green.

- ☐ If the icons remain gray after three minutes has passed, check the status of the device or the wireless adapter.
- ☐ If the icon changes from gray to red, communication with the IP address could not be completed. Check that the IP address is enabled in the environment being used.

This completes this section.

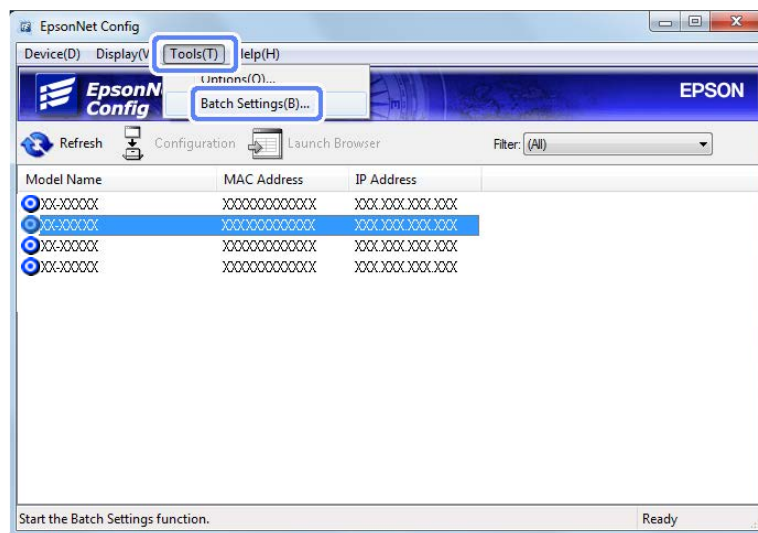
## Creating a SYLK file to Describe the Settings

You can create a SYLK file to describe information for performing batch settings. You can create a SYLK file using one of the following methods.

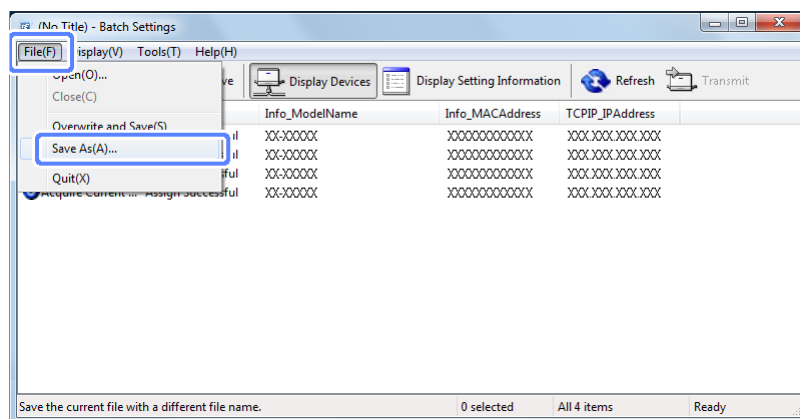
### Creating a SYLK file by acquiring information from the connected device (Windows only)

- 1 Start EpsonNet Config, and then click **Tools - Batch Settings**.

The Batch Settings screen opens and a list of available devices is displayed. It may take a while before all devices, such as devices on a network, are displayed. If the device is not displayed, check that the device or wireless adapter is turned on, or if the same segment as the computer has a device or wireless adapter.



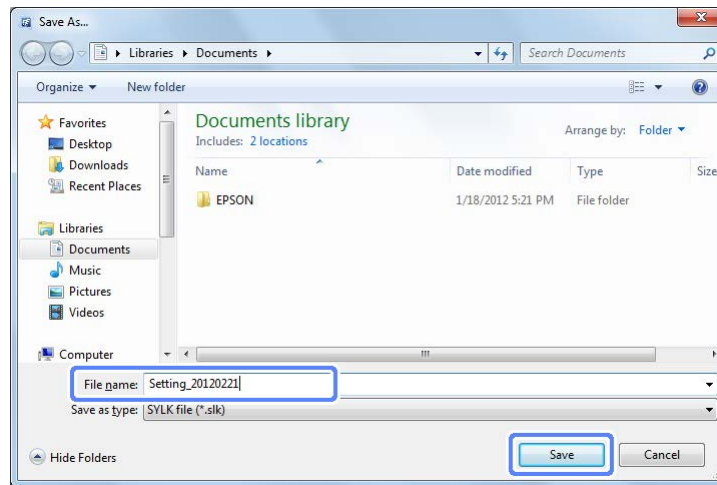
- 2 Click **File - Save as**.



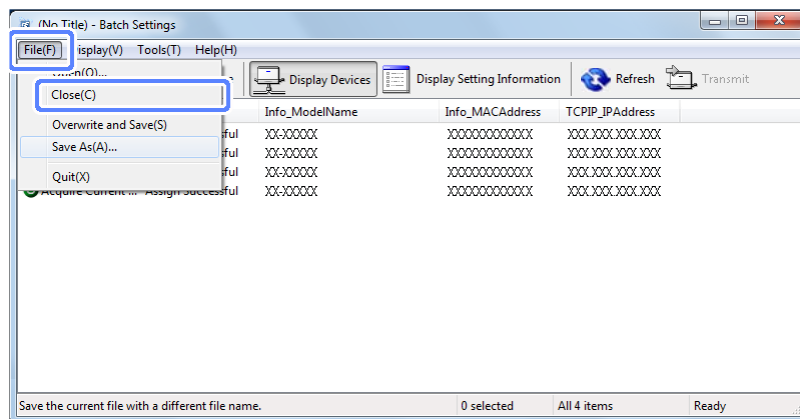
## Using EpsonNet Config

- 3 Enter the file name and select the target folder, and then click **Save**.

A backup file (\*.slk) containing the current settings for all devices is created.



- 4 Click **File-Close**, and then close the Batch Settings screen.



- 5 Open the saved SYLK file in a spreadsheet application (such as Microsoft Excel) or in a text editor.

Setting information is entered in each row. Each row contains the settings for each individual device. Explanations for the setting items is provided on the following page.

🔗 [“Setting Items for the SYLK File” on page 39](#)

	1	2	3	4	5
1	PeculiarModelID	U00016	U00068	U00016	U10032
2	EnableNetworkTW	1	#NULL#	1	#NULL#
3	Info_Software.1.Cat	Main Unit	Main Unit	Main Unit	Main Unit
4	Info_Software.2.Cat	Interface C	Main Unit	Main Unit	Main Unit
5	Info_Software.3.Cat	#NULL#	Main Unit	Main Unit	Main Unit
6	Info_Software.4.Cat	#NULL#	Main Unit	Main Unit	Main Unit
7	Info_Software.5.Cat	#NULL#	#NULL#	Main Unit	Main Unit
8	Info_Software.6.Cat	#NULL#	#NULL#	Main Unit	#NULL#
9	Info_Software.7.Cat	#NULL#	#NULL#	Interface C	#NULL#
10	Info_Software.8.Cat	#NULL#	#NULL#	#NULL#	#NULL#
11	Info_Software.9.Cat	#NULL#	#NULL#	#NULL#	#NULL#
12	Info_Software.10.Cat	#NULL#	#NULL#	#NULL#	#NULL#

## Using EpsonNet Config

6

You can change settings or add a new row and enter setting information for a new device, and then save the file.

	1	2	3	4	5	6
202	Info_Software_50_Vendor	#NULL#	#NULL#	#NULL#	#NULL#	
203	Info_MACAddress	XXXXXXXXXXXXXXXXXXXXXXXXXXXXXXXX				
204	Info_HardwareVersion	1.00	19.00	1.00	3.00	
205	Info_ModelName					
206	Info_SystemLocation	Head Office	Head Office	Head Office	Head Office	
207	Info_Wireless_Physical	#NULL#	#NULL#	#NULL#	#NULL#	
208	Info_Wireless_LANMode	#NULL#	#NULL#	#NULL#	#NULL#	
209	Info_Wireless_SSID	#NULL#	#NULL#	#NULL#	#NULL#	
210	Info_Wireless_Channel	#NULL#	#NULL#	#NULL#	#NULL#	
211	Info_Wireless_TransRate	#NULL#	#NULL#	#NULL#	#NULL#	
212	Info_Wireless_AP	#NULL#	#NULL#	#NULL#	#NULL#	
213	802_3_LinkSpeed_Duple	0	#NULL#	0	#NULL#	

**Note:**

Security items, such as passwords, or read-only items are not output.

When making a batch change to the Administrator Password, add an "AdminNewPassword" column to the SYLK file, and then enter the new password. Also, if you want to automatically authorize the new password (without having to enter a password confirmation), add a column called "AdminCurrentPassword".

This completes this section.

## Creating a new SYLK file

Using the MAC address and model name as the keys, you can create a new SYLK file to set the IP address.

- 1 Open a spreadsheet application (such as Microsoft Excel) or a text editor.
- 2 Enter "Info\_MACAddress", "Info\_ModelName", and "TCPIP\_IPAddress" in the first column as the setting item names.

Enter setting items for the following text strings. To distinguish between upper case/lower case and double-byte/single-byte characters, if only one character is different, the item will not be recognized. Enter the setting item name as described below; otherwise, EpsonNet Config cannot recognize the setting items.

Info_MACAddress				
Info_ModelName				
TCPIP_IPAddress				

- 3 Enter the MAC address, model name, and IP address for each network interface.

Info_MACAddress	0000XXXX0001	0000XXXX0002	0000XXXX0003	0000XXXX0004
Info_ModelName	ALC-XXXXXX	ALC-XXXXXX	ALC-XXXXXX	ALC-XXXXXX
TCPIP_IPAddress	192.168.100.102	192.168.100.103	192.168.100.104	192.168.100.105

- 4 Enter a name and save as a SYLK file (\*.slk).

This completes this section.

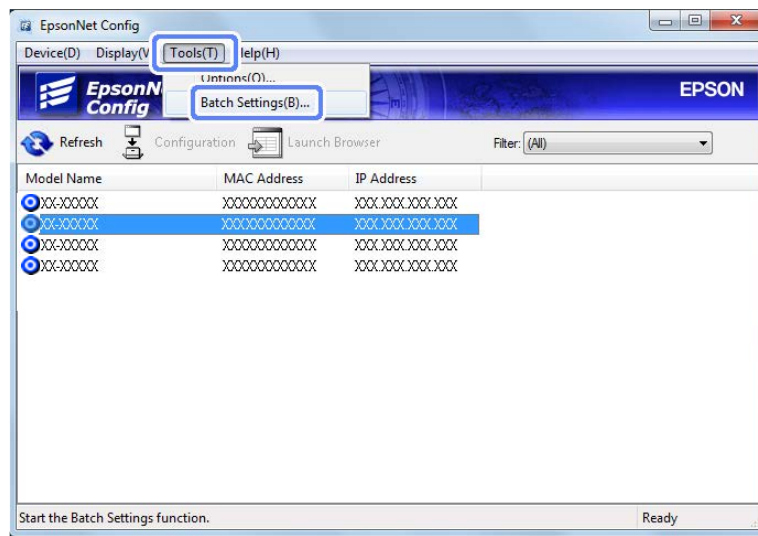
## Creating a Backup File (Windows Only)

This section explains how to create a device backup file using EpsonNet Config.

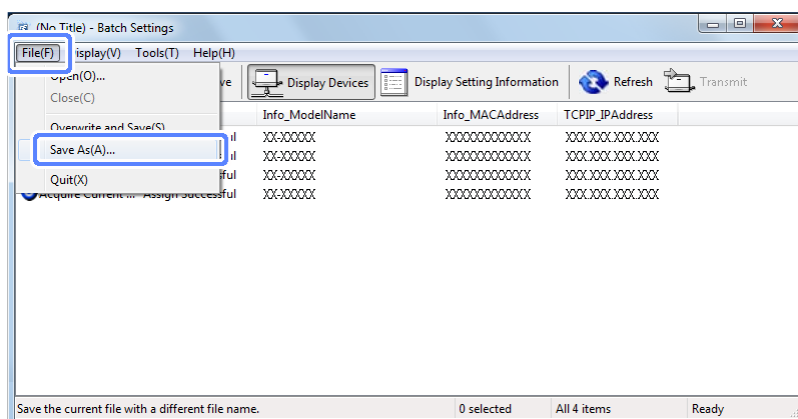
### Creating a backup file for all devices

- 1 Start EpsonNet Config, and then click **Tools - Batch Settings**.

The Batch Settings screen opens and a list of available devices is displayed. It may take a while before all devices, such as devices on a network, are displayed. If the device is not displayed, check that the device or wireless adapter is turned on, or if the same segment as the computer has the device or wireless adapter.



- 2 Click **File - Save as**.



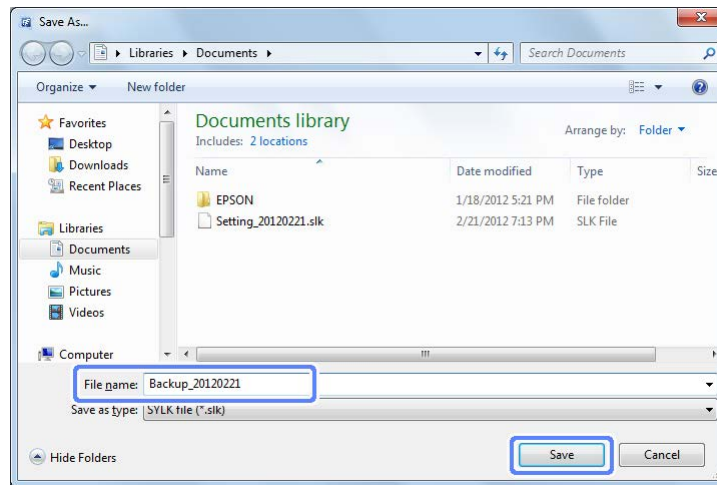


## Using EpsonNet Config

3

Enter the file name and select the target folder, and then click **Save**.

A backup file (\*.slk) containing the default settings for all devices is created.



See the following when restoring device settings using this file.

 [“Making Batch Settings for Devices \(Windows Only\)”](#) on page 23

This completes this section.

## Creating a backup file for a selected device

### Note:

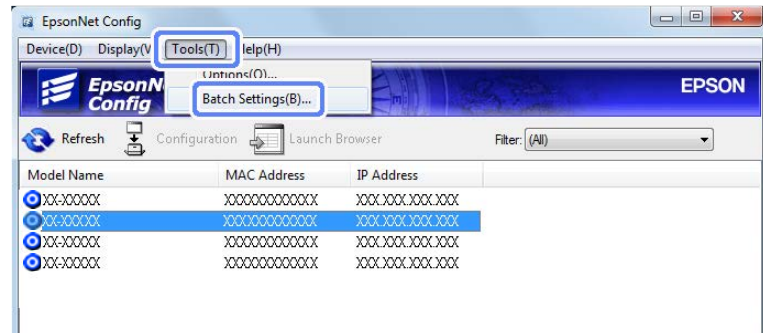
Open the SYLK file created in "Creating a backup file for all devices" in a spreadsheet application (such as Microsoft Excel) or a text editor, and then follow the steps below to create a file by deleting the rows for unnecessary devices, and then saving the file.

See the following for "Creating a backup file for all devices".

🔗 ["Creating a backup file for all devices" on page 16](#)

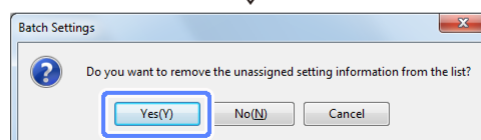
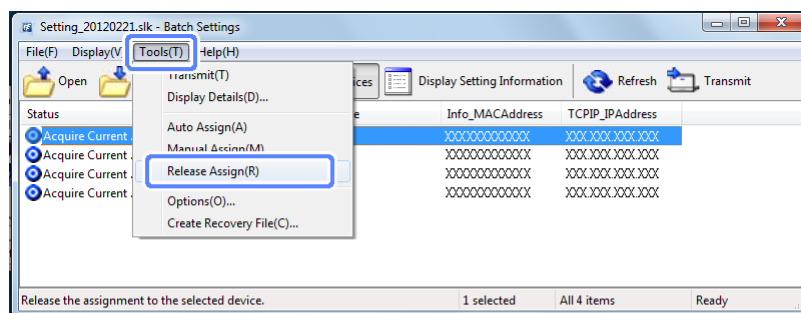
**1** Start EpsonNet Config, and then click **Tools - Batch Settings**.

The Batch Settings screen opens and a list of available devices is displayed. It may take a while before all devices, such as devices on a network, are displayed. If the device is not displayed, check that the device or wireless adapter is turned on, or if the same segment as the computer has the device.



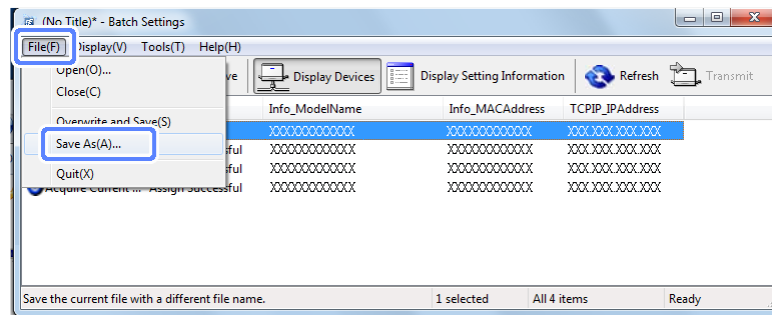
**2** Select the devices for which you do not want to create a backup file, and then click **Tools - Release Assign**. Click **Yes** when the confirmation message is displayed, and the Status column changes to Unassigned.

When releasing multiple devices, repeat this step until you only have the devices for which you want to create a backup file.



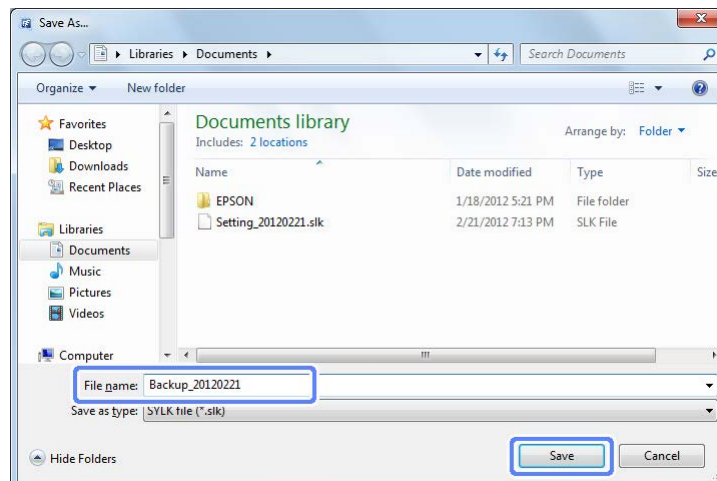
## Using EpsonNet Config

3 Click **File - Save as**.



4 Enter the file name and select the target folder, and then click **Save**.

A backup file (\*.slk) containing the current settings for the selected devices is created.



See the following when restoring device settings using this file.

 [“Making Batch Settings for Devices \(Windows Only\)” on page 23](#)

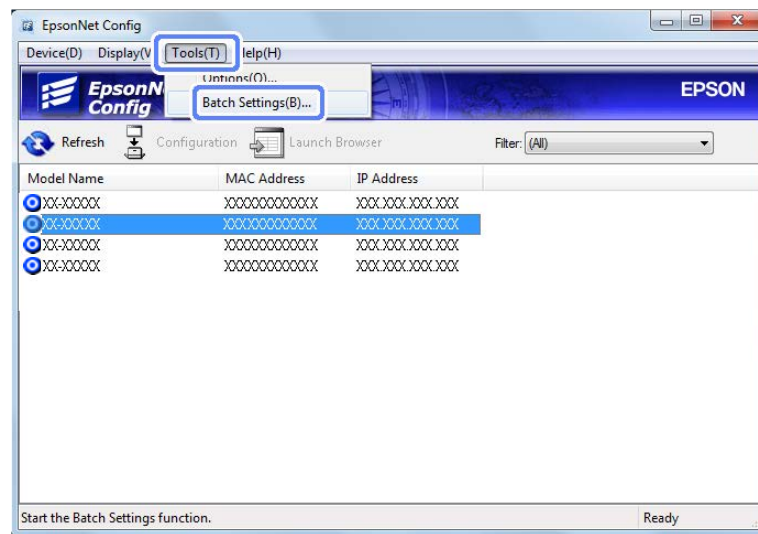
This completes this section.

## Creating a recovery file

While the SYLK file created in "Creating a backup file for all devices" outputs setting information for all current devices, SYLK files created using Create Recovery File only output changes from previously acquired setting information.

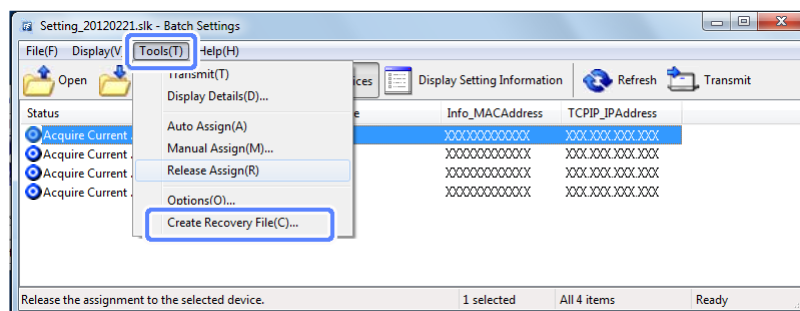
- 1 Start EpsonNet Config, and then click **Tools - Batch Settings**.

The Batch Settings screen opens and a list of available devices is displayed. It may take a while before all devices, such as devices on a network, are displayed. If the device is not displayed, check that the device or wireless adapter is turned on, or if the same segment as the computer has the device or wireless adapter.



- 2 Click **Tools - Create Recovery File**.

The Create Recovery File screen opens and a list of previous setting information is displayed in Restoration Point.



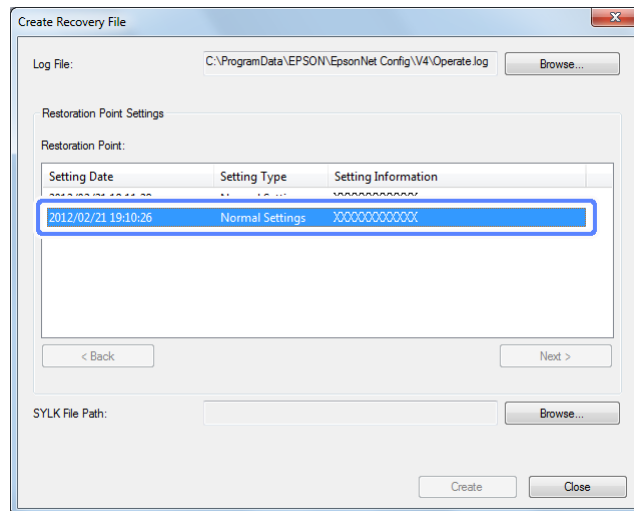
### Note:

If no devices have previously been set by the computer being used, the message "Cannot find the restoration point in the specified log file. Select another log file." is displayed. If there is no restoration point, the recovery file cannot be created. If no restoration point is displayed after setting up a device, check that **Enable Log Output** is selected from Tools - Options - Log.

## Using EpsonNet Config

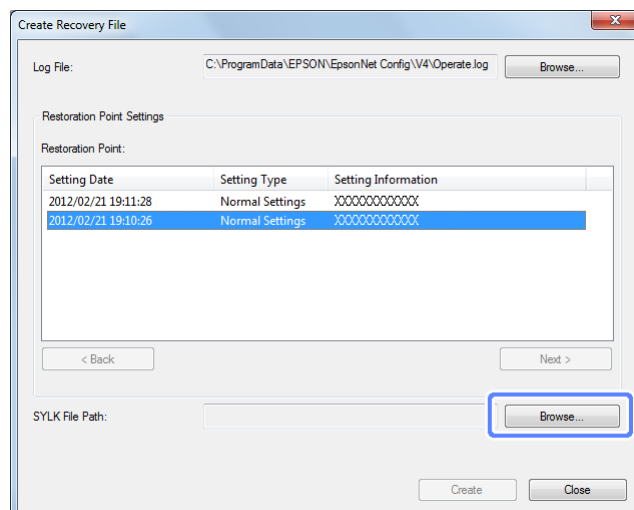
3

Select the point you want to restore from the setting information in Restoration Point.



4

Click **Browse**, enter the file name and select the target folder, and then click **Save**.

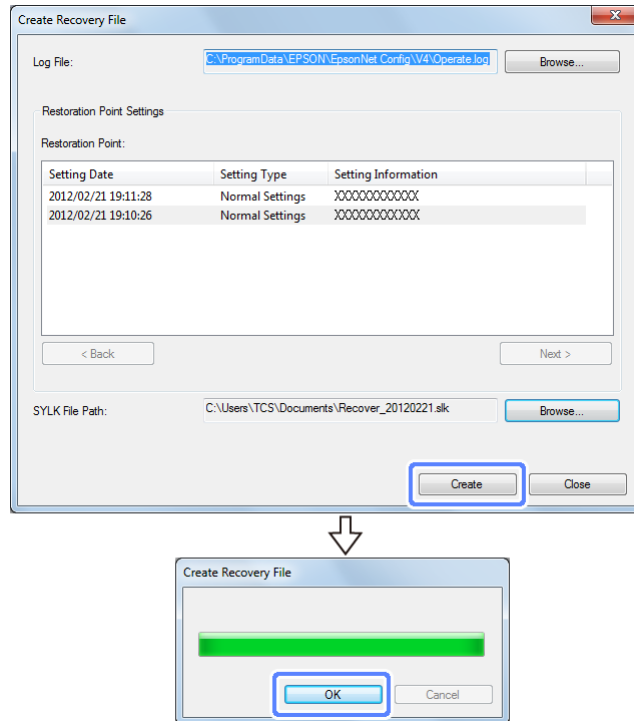


## Using EpsonNet Config

5

Click **Create**, and then click **OK**.

A recovery file (\*.slk) containing the identification information (the default is the MAC address) for the changed device and the values after the changes is created.



**Note:**

To create a recovery file for the selected device, select unnecessary devices, click **Tools - Release Assign**, and then create a recovery file for only the necessary device.

See the following when restoring device settings using this file.

☞ [“Making Batch Settings for Devices \(Windows Only\)”](#) on page 23

This completes this section.

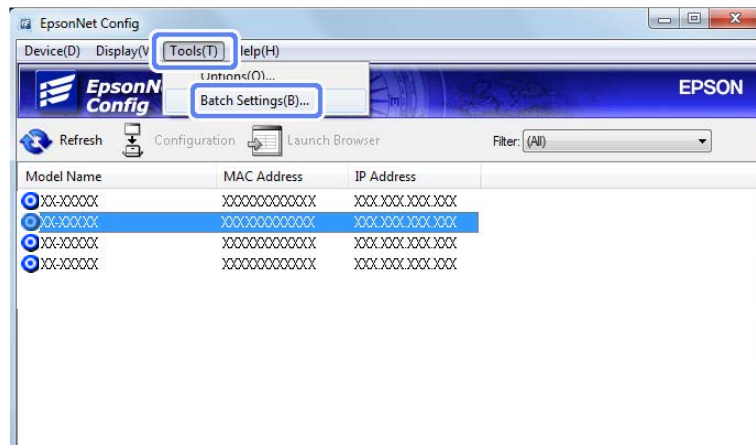
# Making Batch Settings for Devices (Windows Only)

This section explains how to make batch settings for multiple devices using EpsonNet Config. See the following for explanations of each item on the Batch Settings screen.

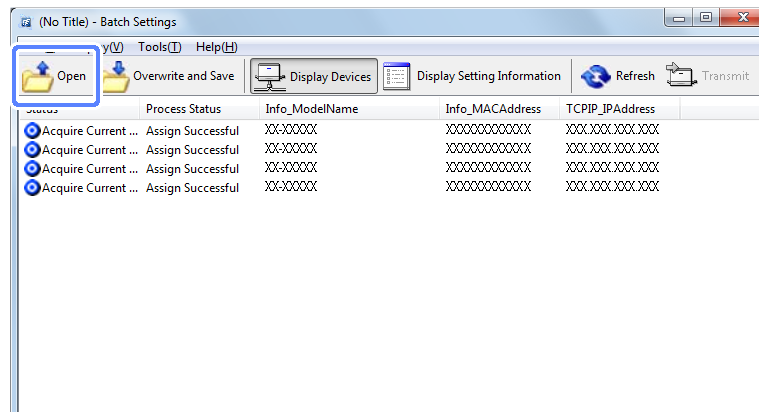
 EpsonNet Config Online Help

## Assigning information automatically

- 1 Start EpsonNet Config, and then click **Batch Settings**.

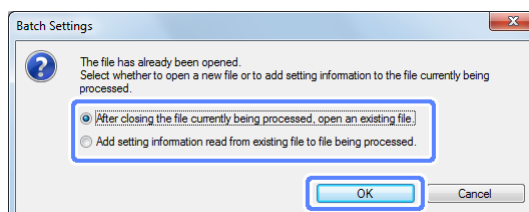


- 2 Click **Open**.



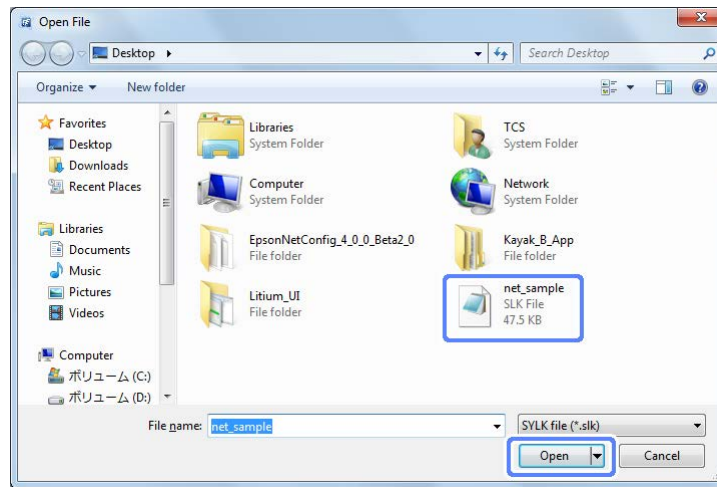
### Note:

If the SYKL file is already opened, the following confirmation screen is displayed. Select how you want to open the file, and then click **OK**.



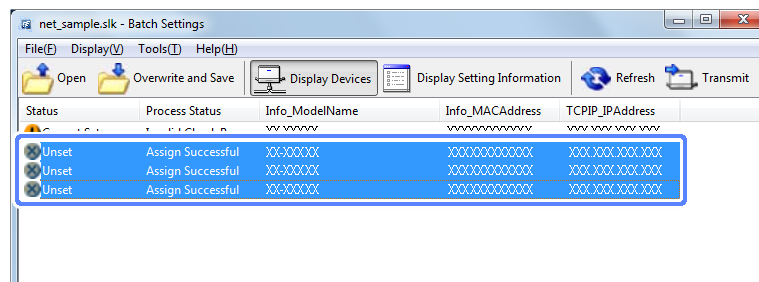
## Using EpsonNet Config

- 3 Select the SYLK file (\*.slk) containing the settings, and then click **Open**.



- 4 Select the devices for which you want to perform batch settings with the Status column set to **Unset**, and the Process Status set to **Assign Successful**.

When making multiple selections, press **Ctrl** or **Shift** and click or drag your mouse,







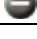




### Information transmission status

Icon	Status	Process Status	Explanation
	Unset	Assign Successful	The information file has been read successfully, and the information has been assigned. Assigned information can be transmitted to each device.
	Unset	Setup Failed	Cannot perform setup. Check the status of the connected device. Also, check the description in the settings file. Information can be sent.
	Setup Complete	Setup Successful	Information transmitted successfully and reboot performed.
	Setting Value Match	Assign Successful	Setting values are the same as the read-in settings file. Although information can be transmitted, setup has already been performed and so the information does not need to be transmitted.
	Acquire Current Setting Value	Assign Successful	Current settings have been acquired from each device. Although information can be transmitted, the settings are the same as the current device and so the information does not need to be transmitted.



## Using EpsonNet Config

### Information cannot be transmitted

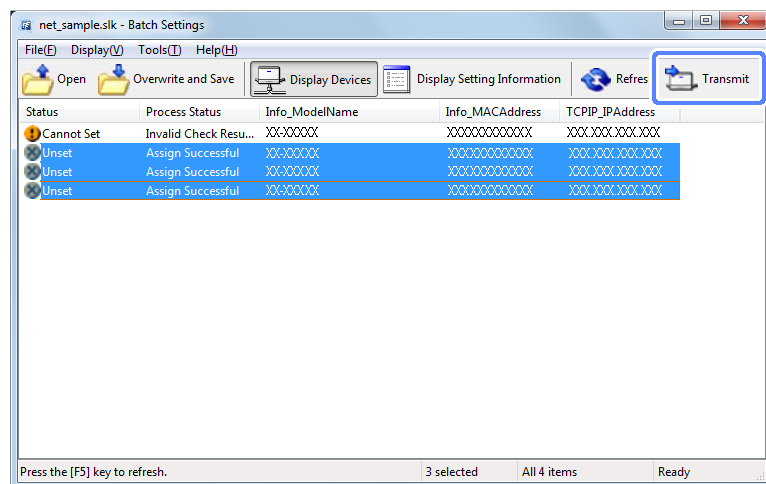
Icon	Status	Process Status	Explanation
	Unassigned		Information cannot be assigned to each device using the read settings file.
	Unassigned	Assign Failed	Assignment failed. <sup>*1</sup>
	Unset	Searching	Searching for the device indicated in the settings file. <sup>*2</sup>
	Setup Complete	Searching	Searching for the device indicated in the settings file. <sup>*2</sup>
	Setup Complete	Rebooting	Rebooting after successful transmission of settings.
	Unset	Search Failed	Cannot find the device. Check that all devices are turned on. <sup>*2</sup>
	Cannot Set	Invalid Check Results	There is an error in the setting file descriptions. Follow the steps below to check the descriptions.  1. Double-click the device that contains the error to open the Display Details screen, and then check items in Check Results that are marked as NG. 2. Double-click the NG item and correct the setting directly, or correct the setting file contents, and then start again from step 2.
	Setup Complete	Search Failed	A timeout occurred while searching for the Setup Complete status. <sup>*2</sup>
	Setup Complete	Reboot Failed	Cannot confirm the device after transmitting settings. Check that the device is turned on, or if it has rebooted normally.

<sup>\*1</sup> Only when the device is displayed.

<sup>\*2</sup> Only when setting information is displayed.

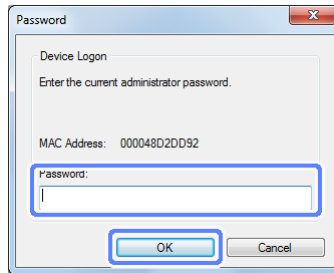
5

Click **Transmit**.



## Using EpsonNet Config

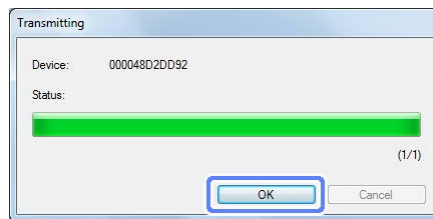
- 6 When the password entry screen is displayed, enter the password, and then click **OK**.  
Transmit the settings.



**Note:**

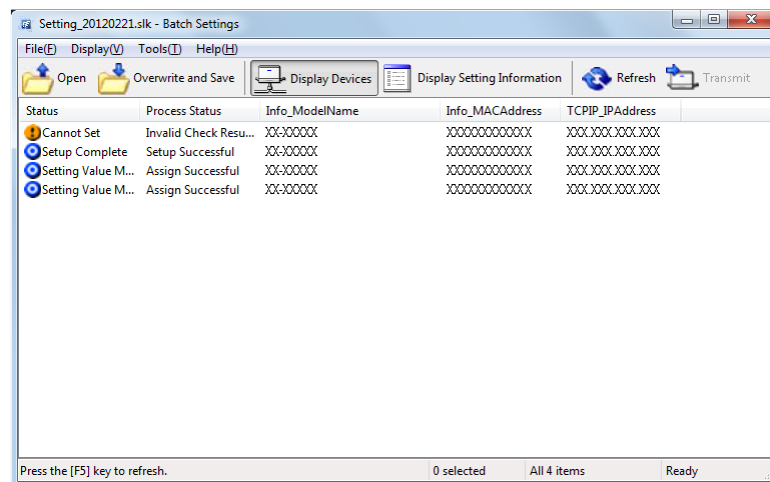
- ❑ The information is transmitted to the network I/F, and then the message "Configuration successfully completed." is displayed. Do not turn off the device or the wireless adapter, and do not send any data to the device.
- ❑ See the following when setting the password.  
🔗 ["Setting an Administrator Password" on page 38](#)

- 7 Click **OK**.








- 8 Check the status of the device you set.

For devices that show 🚫 or 🔄, check the contents of the settings file, or that the device has rebooted normally.



## Using EpsonNet Config

Icon	Status	Process Status	Explanation
	Setup Complete	Setup Successful	Setup completed normally.
	Setup Complete	Rebooting	When information has been transmitted, each device needs to reboot to enable the settings. A check is performed to determine whether or not the device can be connected to after rebooting.
	Setup Complete	Reboot Failed	Cannot confirm the device after transmitting settings. Check that the device is turned on, or if it has rebooted normally.
	Setup Complete	Searching	Searching for the device indicated in the settings file. *
	Setup Complete	Search Failed	Cannot check devices that have already been setup. Check that the device is turned on, or if it has rebooted normally. *

\* Only when setting information is displayed.

This completes this section.

## Assigning information from settings one at a time (Manually assigned)

Create a file describing the IP address, subnet mask, and the default gateway, and select one device at a time to make settings.

### Create a file outlining the settings

- 1 Open a spreadsheet application (such as Microsoft Excel) or a text editor.
- 2 Enter "TCPIP\_IPAddressAuto", "TCPIP\_IPAddress", "TCPIP\_SubnetMask", and "TCPIP\_Gateway" in the first column as the setting item names.

Enter setting items for the following text strings. To distinguish between upper case/lower case and double-byte/single-byte characters, if only one character is different, the item will not be recognized. Enter the setting item name as described below; otherwise, EpsonNet Config cannot recognize the setting items.

TCPIP_IPAddressAuto				
TCPIP_IPAddress				
TCPIP_SubnetMask				
TCPIP_Gateway				

**Note:**

Create a file without MAC address information. Because the MAC address is automatically set as the key for use by default, information is assigned automatically when a MAC address is found, and manual assignment cannot be performed. You can change the automatically assigned keys for use in Tools - Options - Auto Assign - Auto Assign Key Settings on the Batch Settings screen.

- 3 Enter the values in each column.

"TCPIP\_IPAddressAuto" specifies the setting method for assigning the IP address. If the setting value is "5", the static IP address is manually assigned.

TCPIP_IPAddressAuto	5	5	5	5
TCPIP_IPAddress	192.168.100.102	192.168.100.103	192.168.100.104	192.168.100.105
TCPIP_SubnetMask	255.255.255.0	255.255.255.0	255.255.255.0	255.255.255.0
TCPIP_Gateway	192.168.100.101	192.168.100.101	192.168.100.101	192.168.100.101

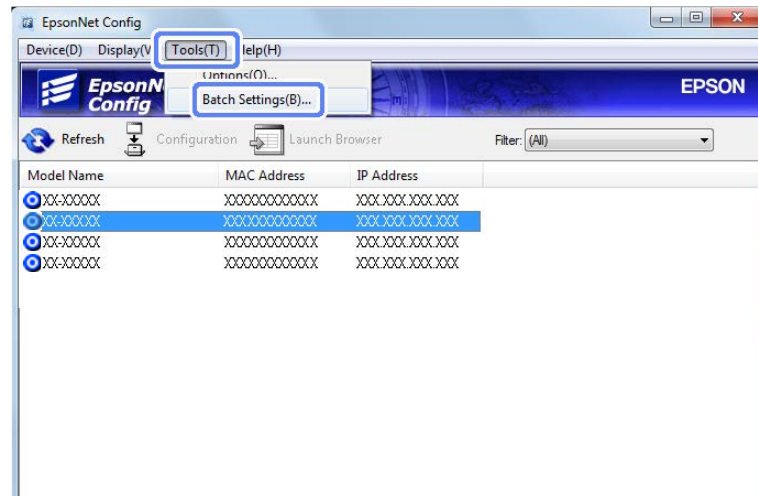
- 4 Enter a name and save as a SYLK file (\*.slk).

This completes this section.

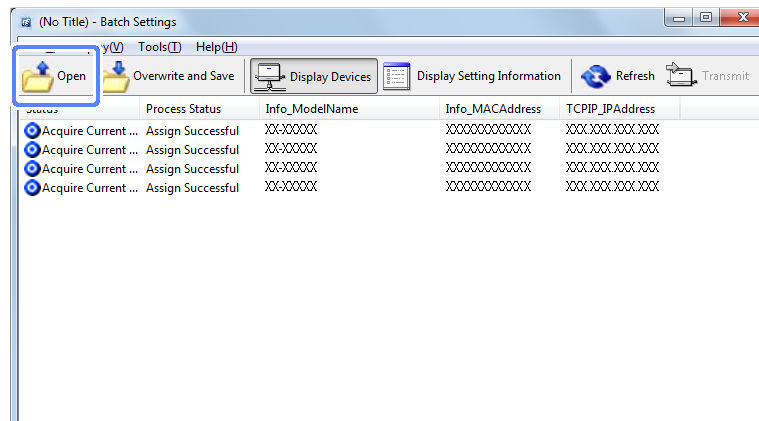
## Using EpsonNet Config

### Reading the configuration file and making settings one at a time

- 1 Start EpsonNet Config, and then click **Tools - Batch Settings**.

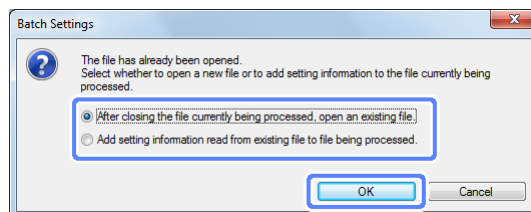


- 2 Click **Open**.



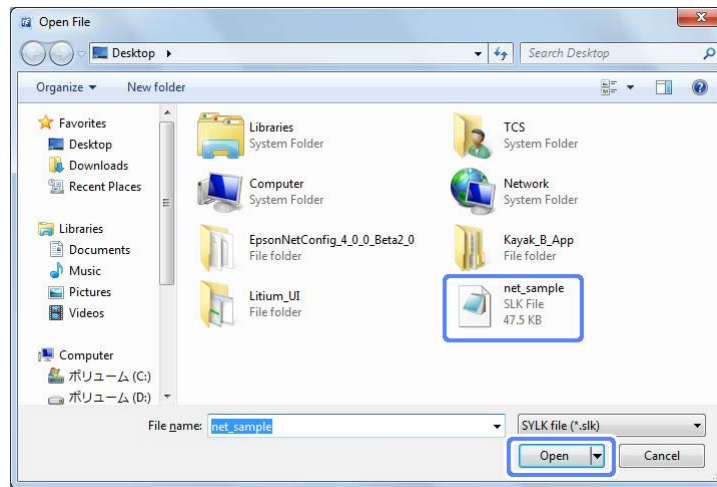
#### **Note:**

If the SYKL file is already opened, the following confirmation screen is displayed. Select how you want to open the file, and then click **OK**.

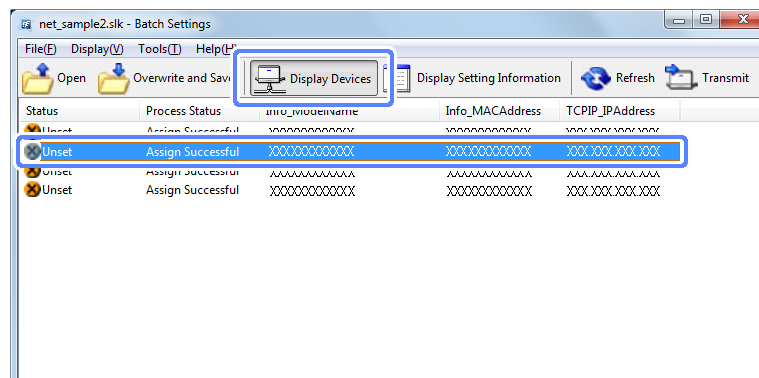


## Using EpsonNet Config

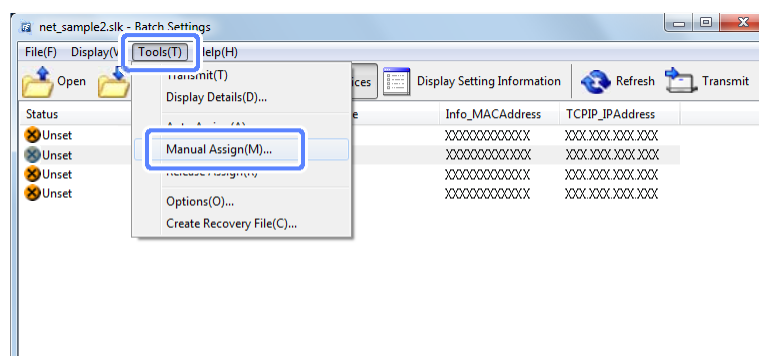
- 3 Select the SYLK file (\*.slk) containing the settings, and then click **Open**.



- 4 Click **Display Devices**, and then select the device you want to set.
- When making multiple selections, press **Ctrl** or **Shift** and click or drag your mouse,



- 5 Click **Tools - Manual Assign**.

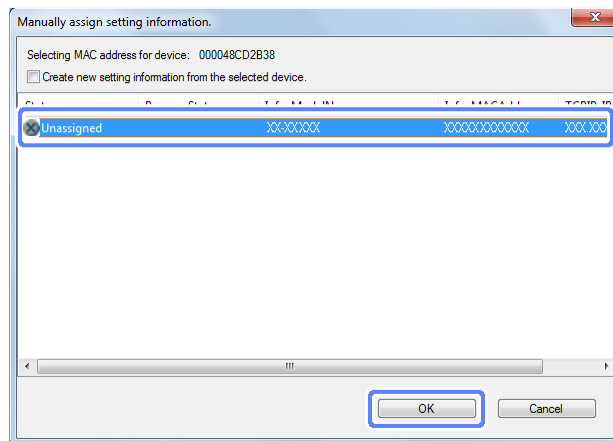


### Note:

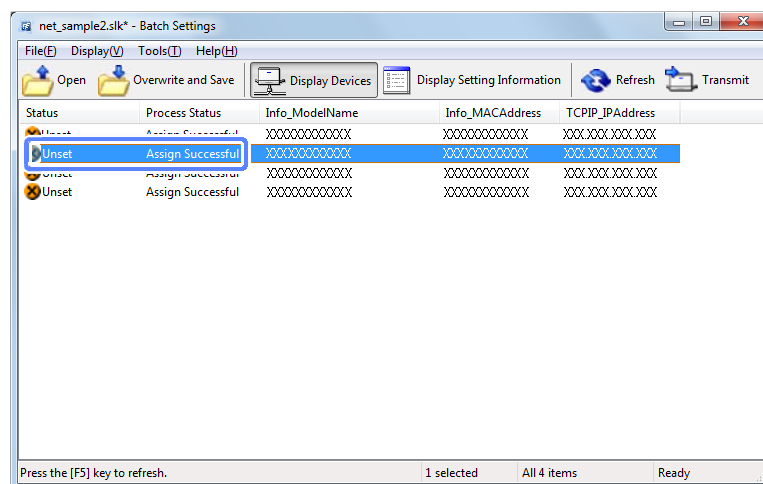
If you search for a device when the file is open or after opening the file, auto assignment is performed. If the target setting information has already been assigned to other devices, setting information is not displayed on the Manually assign setting information screen. Release the assignments from Tools - Release Assign.

## Using EpsonNet Config

- 6 Select the setting information line you want to assign, and then click **OK**.



- 7 Check that Unset is displayed in the Status column and Assign Successful is displayed in Process Status column.



- 8 Click **Transmit**, and then click **OK**.

This completes this section.

# Registering Different Address Books

You can import e-mail addresses, target folders, abbreviated fax numbers, and so on from a product and edit the data.

**Note:**

*This function is only available for supported models. See the Epson Web site for more information on supported models.*

## Editing individually


- 1 Select the device you want to configure.

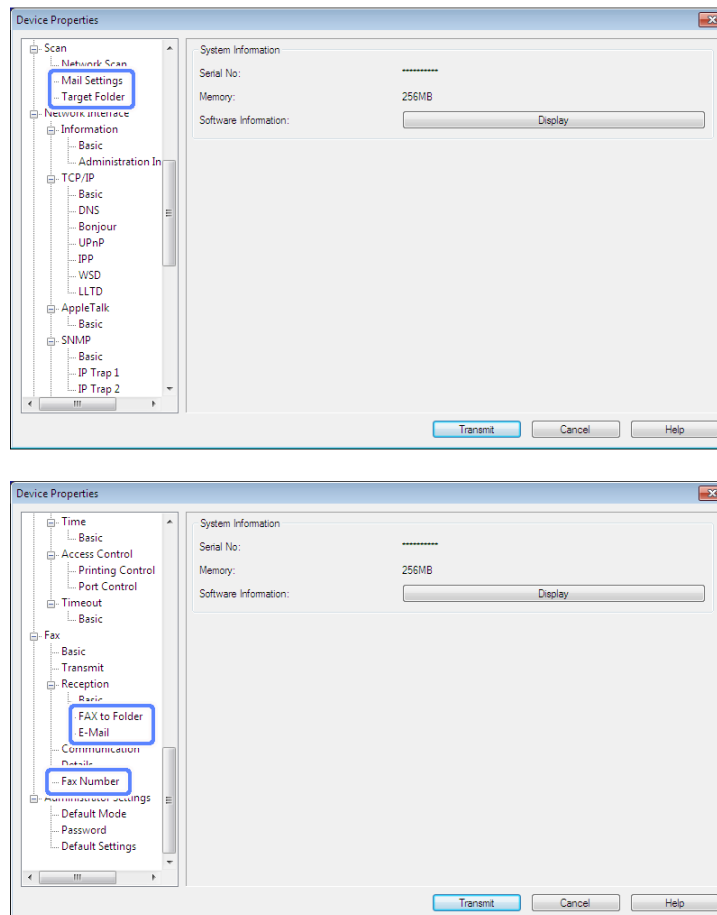
If the device is not displayed, check that the device or wireless adapter is turned on, or if the same segment as the computer has a device.

- 2 Click **Configuration**.

- 3 Click the item you want to edit from Scan - Mail Settings/Target Folder for scanners, Fax - Reception - FAX to Folder/E-Mail or Fax - Fax Number for faxes, or Common - Contacts.

See the following for detailed information for each item.

 EpsonNet Config Online Help

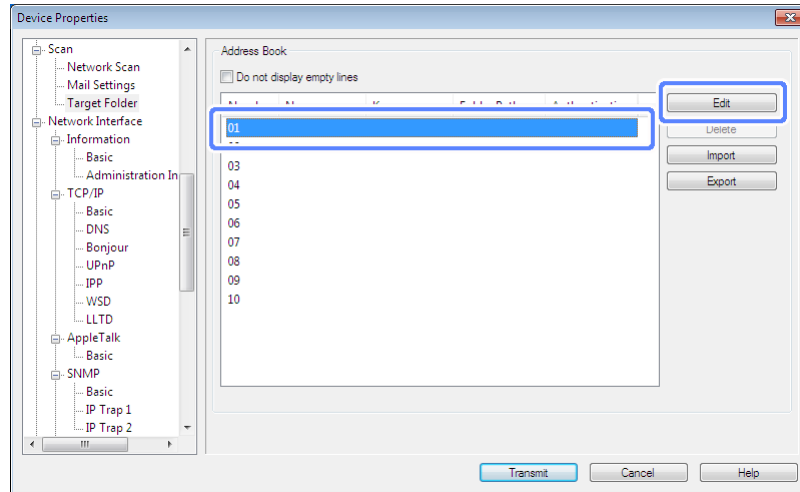




## Using EpsonNet Config

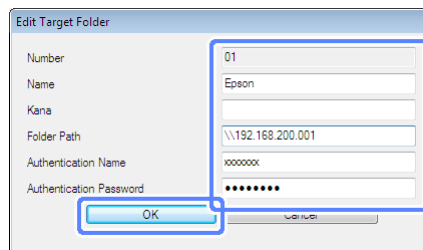
- 4 Select the number you want to edit, and then click **Edit**.

Edit is not displayed on the fax Folder screen. Go to step 5.  
Screen for Target Folder.



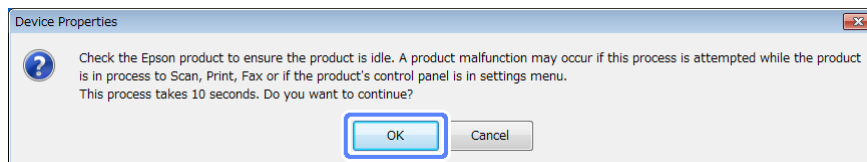
- 5 Set each item, and then click **OK**.

OK is not displayed on the fax Folder screen. If setup is complete, go to step 6.

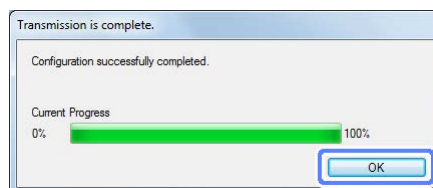


- 6 If all settings are complete, click **Transmit**.

- 7 When a confirmation screen is displayed, click **OK** to start transmitting the settings.



- 8 Click **OK** to complete transmission.



This completes this section.

# Making batch settings

## Creating a settings file


- 1 Select the device you want to configure.

If the device is not displayed, check that the device or wireless adapter is turned on, or if the same segment as the computer has a device.

- 2 Click **Configuration**.

- 3 Click the item you want to edit from Scan - Mail Settings/Target Folder for scanners, Fax - Reception - E-Mail or Fax - Fax Number for faxes, Common - Contacts, and Administrator Settings - Access Limitation.

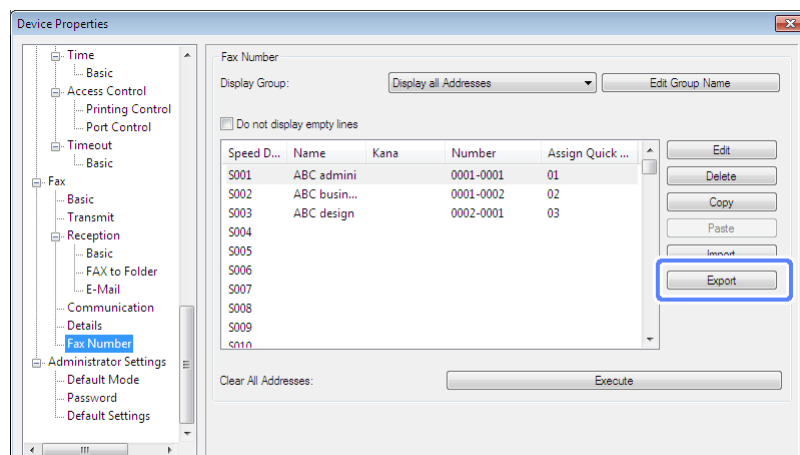
See the following for detailed information for each item.

 EpsonNet Config Online Help

- 4 Click **Export**.

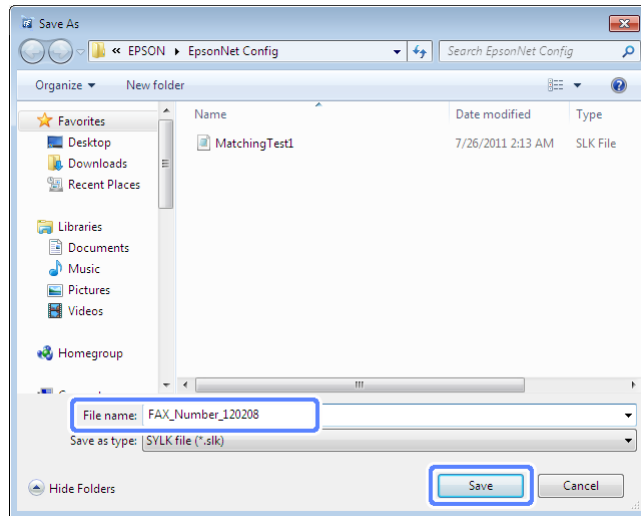
If an export item contains security information (such as a password), select whether or not to export the file with the security information. You need to enter the password when exporting the file.

Screen for Fax Number.



## Using EpsonNet Config

- 5 Enter the File Name, and then click **Save**.



- 6 If the exported file does not contain security information, open the saved file using a spreadsheet application (such as Microsoft Excel) or a text editor.

For exported files that contain security information, the file is in binary format. Do not edit the exported file.

	1	2	3	4	5	6	7
1	Index	Name	Kana	FaxNumbe	Q01	Q02	Q03
2	001	ABC admin		0001-0001	1		
3	002	ABC buine		0001-0002		1	
4	003	ABC desig		0002-0001			1
5	004						
6	005						
7	006						

- 7 The file is saved as a SYLK file (\*.slk) or a binary file (\*.ene).

This completes this section.

## Reading the settings file

- 1 Select the device you want to configure.

If the device is not displayed, check that the device or wireless adapter is turned on, or if the same segment as the computer has a device.

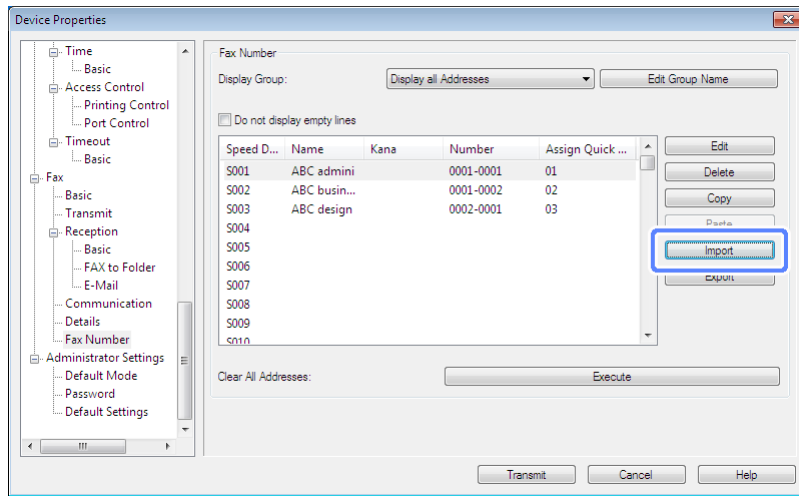
- 2 Click **Configuration**.

- 3 Click the item you want to edit from E-Mail, FAX to Folder, Fax Number, and so on.

- 4 Click **Import**.

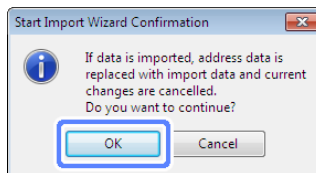
## Using EpsonNet Config

Screen for Fax Number.



5

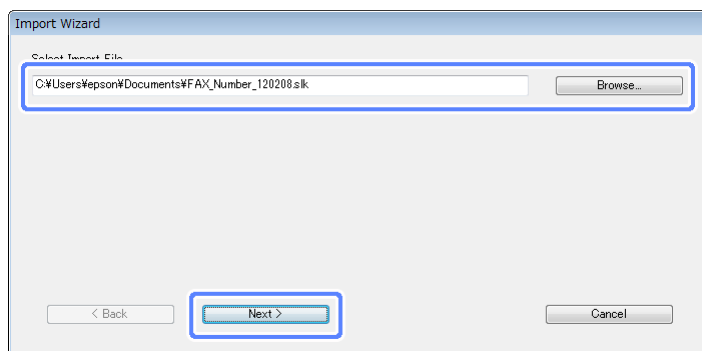
When the "Start Import Wizard Confirmation" message is displayed, click **OK**.



6

Set the path to the file you want to import, and then click **Next**.

Click **Browse**, and then select the SYLK file (\*.slk) or binary file (\*.ene) containing information such as e-mail addresses or registered user information for the Access Limitation function, and then click **Open**. You need to enter the password set when the file was exported to open a binary file.



### Note:

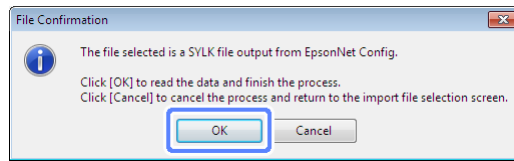
CSV (\*.csv) format files can also be imported.

7

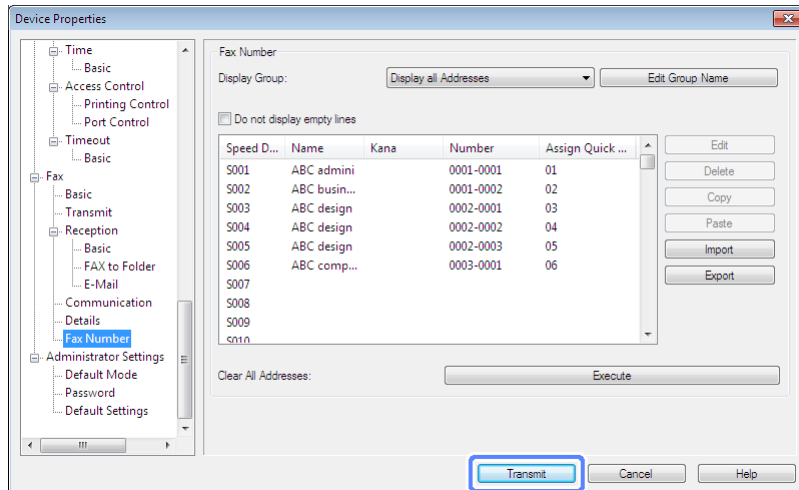
When the "File Confirmation" message is displayed, click **OK**.

## Using EpsonNet Config

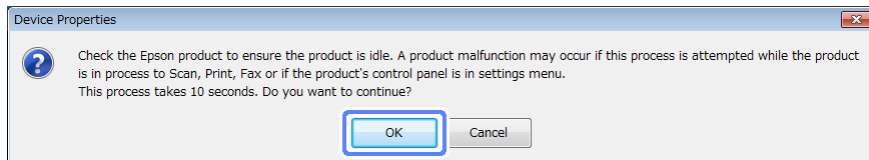
If an error screen is displayed, there is an error in the settings file. Check the description in the settings file.



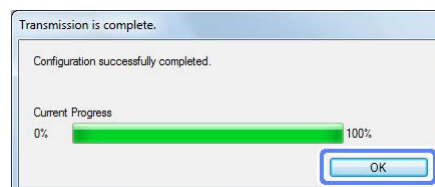
**8** Click **Transmit**.



**9** When a confirmation screen is displayed, click **OK** to start transmitting the settings.



**10** Click **OK** to complete transmission.



This completes this section.

# Setting an Administrator Password

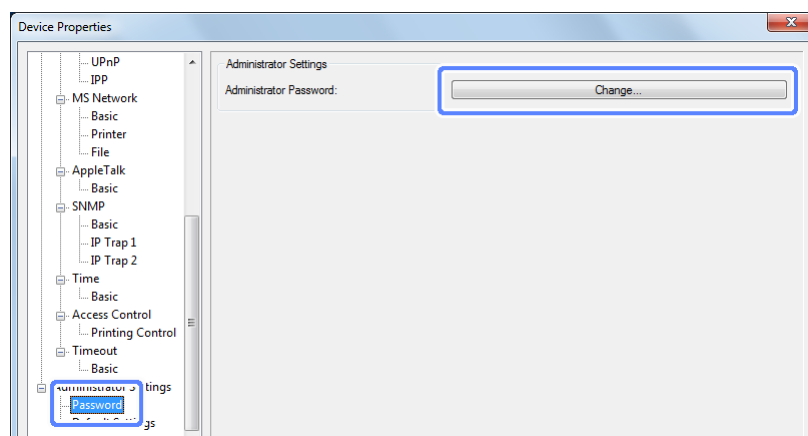
You can use an administrator password to protect device settings. The password is not set by default.

**1** Select the device you want to configure.

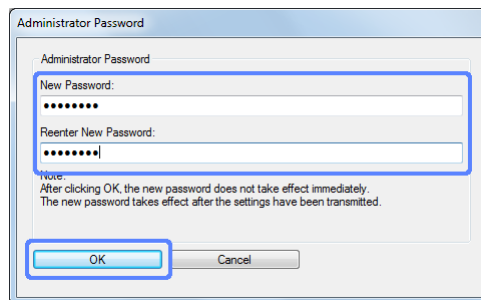
If the device is not displayed, check that the device or wireless adapter is turned on, or if the same segment as the computer has a device.

**2** Click **Configuration**.

**3** Click **Administrator Settings - Password**, and then click **Change**.



**4** Enter the password in New Password and Reenter New Password, and then click **OK**.



**5** Click **Transmit** to set the necessary items.

It can take up to three minutes until the settings are enabled. Do not turn off the device or wireless adapter during this time.

**Note:**

- ❑ The device passwords are common for each application used in network settings. Make sure you manage the password carefully.
- ❑ If you forget the password, see the documentation provided with the device to restore the default settings. Also, the password is not reset even if the printer's built-in network I/F is returned to its default settings. Contact the Epson sales company if you forget the password.

This completes this section.

## Setting Items for the SYLK File

This section explains the main settings that can be set in the SYLK file.

Item	Explanation
Info_MACAddress	The MAC address for the device. A string of 12 characters. In the batch settings function, this determines whether the device on the network matches the information described in the SYLK file using the MAC address.
TCPIP_IPAddressAuto	Specifies whether the IP address is set manually or automatically. For manual this is set to <b>5</b> , and for automatic this is set to <b>1</b> .
TCPIP_IPAddress	Specifies the IP address.
TCPIP_SubnetMask	Specifies the subnet mask.
TCPIP_Gateway	Specifies the gateway address.
EnableMSNet	Sets up Microsoft network shared printing. This is set to <b>0</b> if shared printing is not being used, and set to <b>1</b> if it is being used.
EnableAppleTalk	Sets up AppleTalk. This is set to <b>0</b> if AppleTalk is not being used, and set to <b>1</b> if it is being used.
EnableNetWare	Sets up NetWare. This is set to <b>0</b> if NetWare is not being used, and set to <b>1</b> if it is being used.

**Note:**

*#NULL# is entered for setting items that are not supported.*